

“LOGO REDESIGNED TO REFLECT REBRANDING OF NEXT WELLNESS”



Isis Ramsey  
IDES 310 Studio V

# Table of Contents

- A1: Cover Page
- A2: Table of Contents
- A3: Inspiration
- A4: Concept Development Process
- A5: Concept Development Process pt.2
- A6: Furniture Plan
- A7: Interior Architectural Finishes
- A8: Entrance and Reception
- A9: Entrance and Reception pt.2
- A10: Work Cafe
- A11: Work Cafe pt.2
- A12: Employee Work Area - Rendered
- A13: Reflected Ceiling Plan (RCP)
- A14: Lighting Schedule





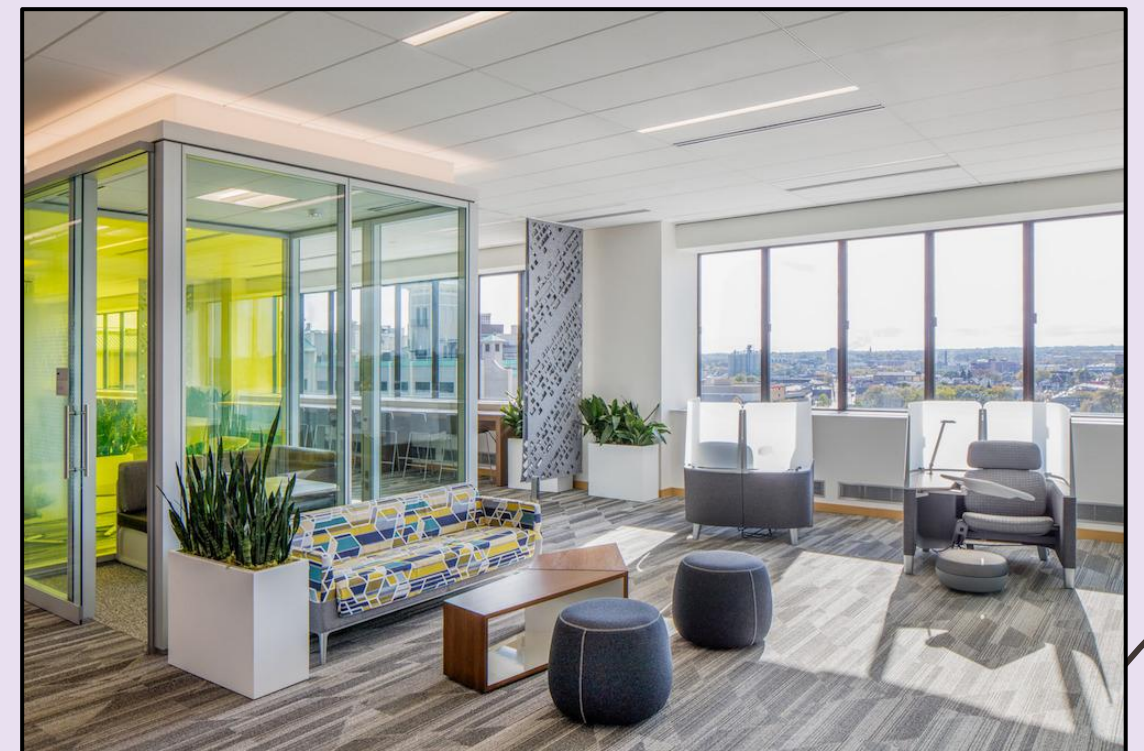
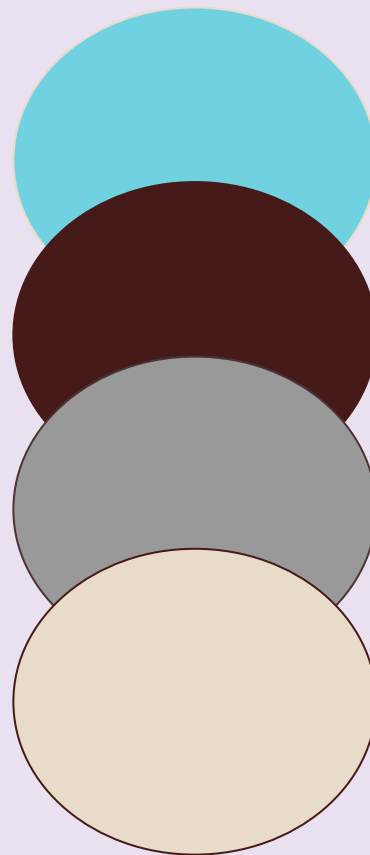
# Inspiration



## Design Concept:

In an effort to create an inclusive, creative, and collaborative hybrid work environment, NEXT Wellness would design this work environment to function comfortably, efficiently, and for the wellbeing for both employees and clients. Stepping away from traditional overly formal work spaces that are “boring” and plain, NEXT Wellness is moving to create a space that is comfortable, social, and open. NEXT Wellness aims to better enhance productivity, creativity, and an overall sense of peace while working in the office. Per the LEED category "Quality Views/Daylight," designs will be placed in shared open areas, such as the employee work areas, to allow employees to seamlessly shift through all 4 modes of work (learn, socialize, focus, and collaborate) and support productivity in a light and open area, as this office location is on the 4th floor of this building. The plan for this project is to attack the project goals with an understanding on how to apply design principles, palette of place/posture, along with WELL and LEED standard features. The project will take what’s already there and improve the area to make it efficient and innovative.

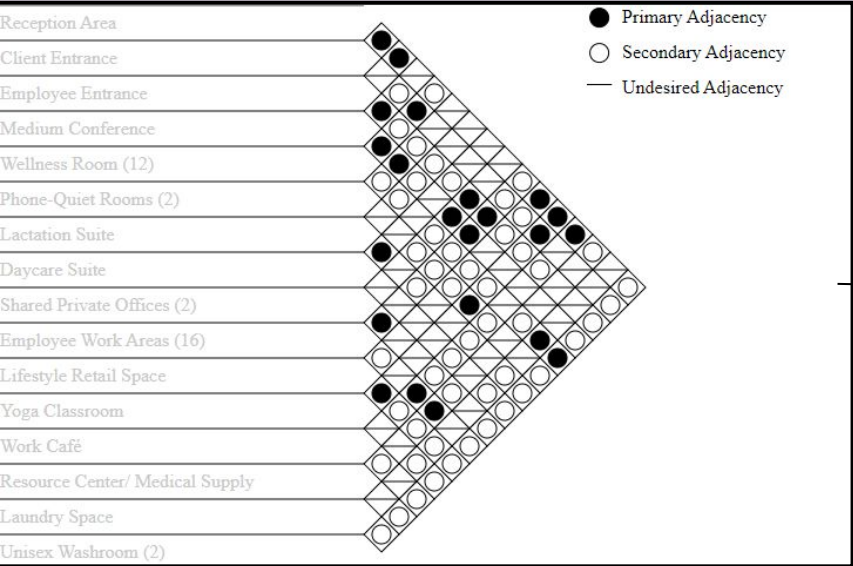
## Accent Colors



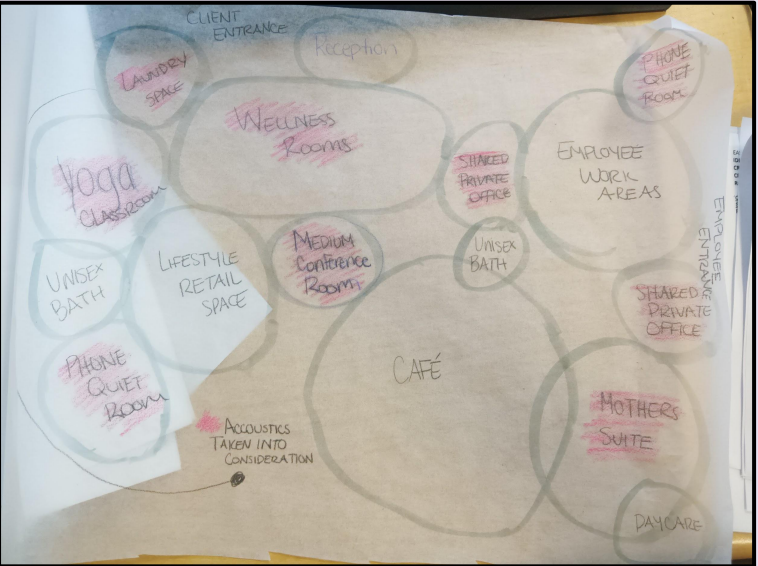


# Concept Development Process

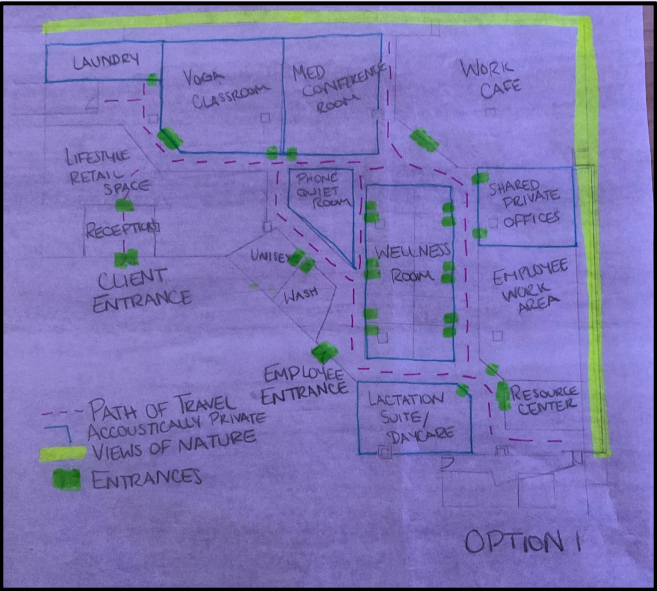
Adjacency Matrix



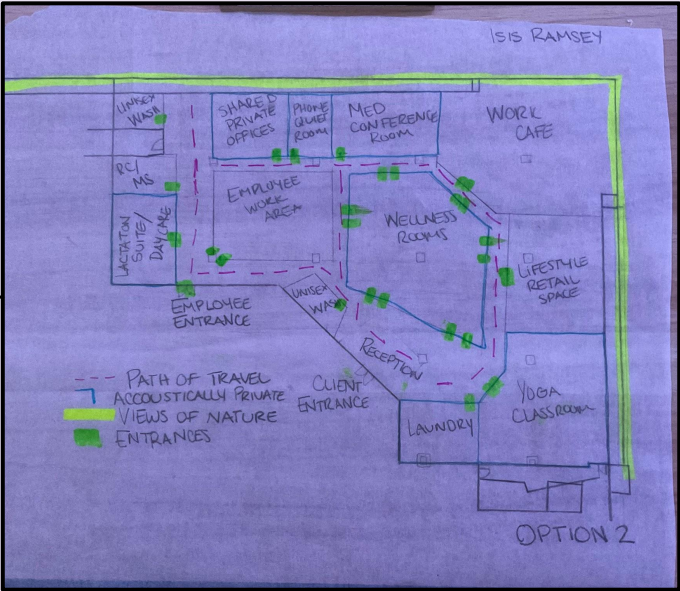
Bubble Diagram



Option 1



Option 2

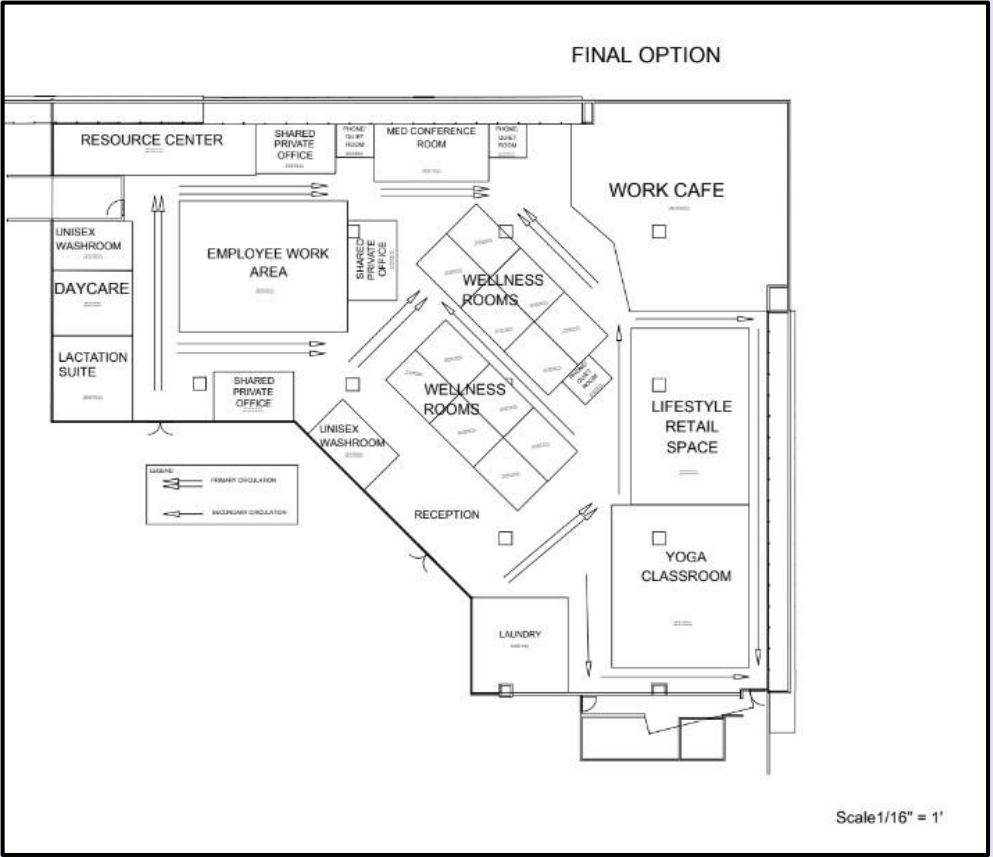
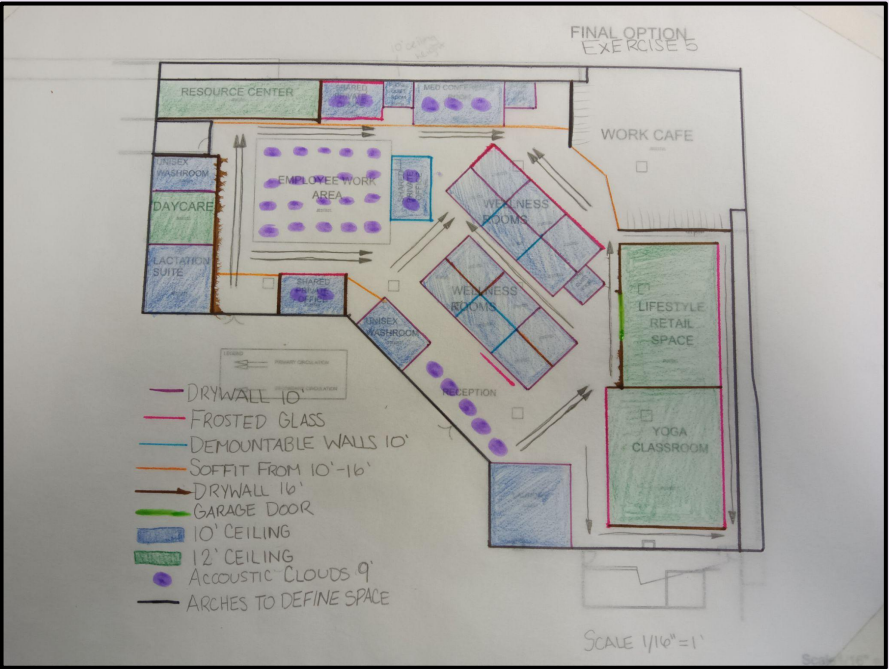


## Design Process:

Going into this project, my plan was to use all of the exterior walls to their fullest potential. In earlier concepts, I placed multiple rooms and spaces right against the walls to maximize capacity. As I was completing the adjacency matrix and bubble diagram, I discovered having the rooms directly on the east wall was not the best idea. The client ended up choosing Option 2 for the final decision. So I moved those rooms to the right and created a hallway that has straight access to the emergency exit. First, I went for the lactation suite and surrounding areas, knocking out the smaller rooms first. The final 3 rooms, also the biggest, were the work cafe, lifestyle retail space, and the employee work area. Originally, I wanted to create a mix of “standard” office style and a more relaxed office homey style. After a bit of guidance and following the rest of the design packet, I opted for a more open lounging type work environment. The furniture layout I want to say was the most fun of everything. Working with this program and seeing NEXT Wellness’ project goal come to life has been my favorite part of this project. The last and final part of the project will be completing the reflected ceiling plan.

## Final Option

## Privacy Concepts Sketch



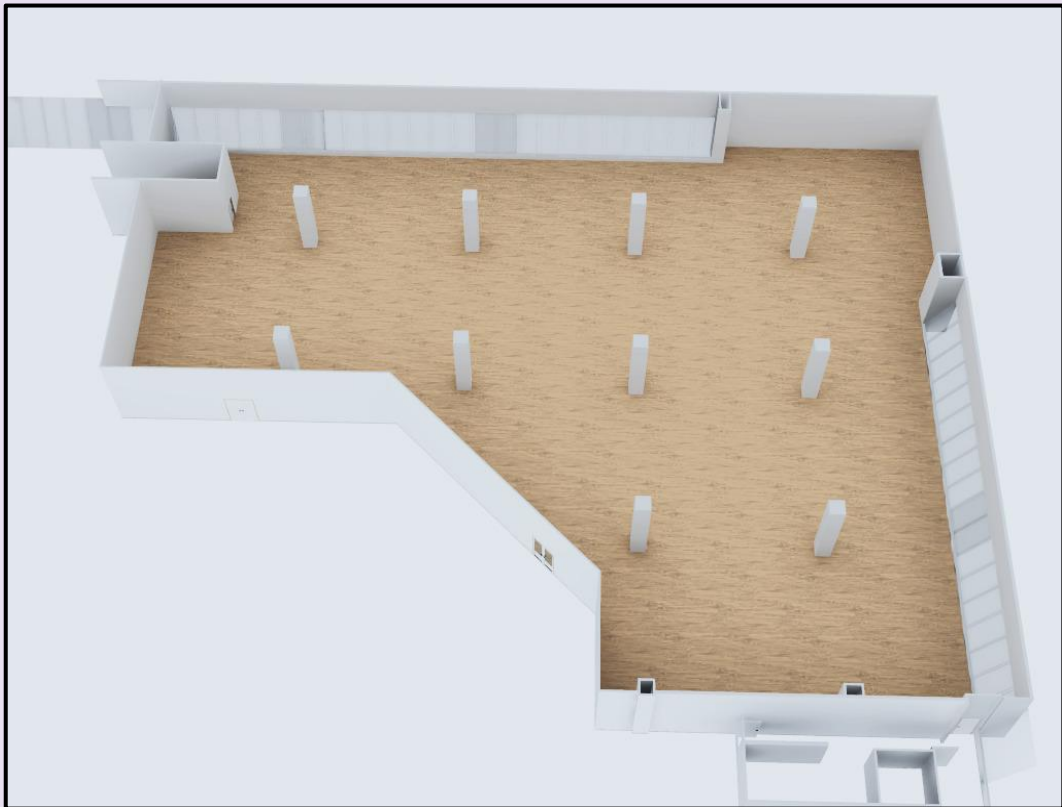


# Concept Development Process pt. 2

SPACE PLANNING:

Travel Distance: 165'-8"  
Common Path of Travel: 49'-6"  
Half Diagonal Rule: 197'-3"  
No Dead End Corridors

Empty Building Shell



ROOM	QTY.	AREA	TOTAL
LACTATION SUITE	1	260	260
MINI DAYCARE	1	200	200
UNISEX WASHROOMS	2	150	300
SHARED PRIVATE OFFICE	3	150	450
MEDIUM CONFERENCE ROOM	1	250	250
PHONE ROOMS/ BOOTHS	3	48	144
LAUNDRY ROOM	1	350	350
RECEPTION AREA	1	400	400
RESOURCE SUPPLY/ MEDICAL ROOM	1	400	400
YOGA CLASSROOM	1	860	860
WORK CAFE	1	1535	1535
WELLNESS ROOMS	12	100	1200
EMPLOYEE WORK AREA	1	850	850
LIFESTYLE RETAIL SPACE	1	800	800
TOTAL SQ FT			= 7,999 SQ FT
TOTAL SQ FT AVAILABLE			11,977 SQ FT



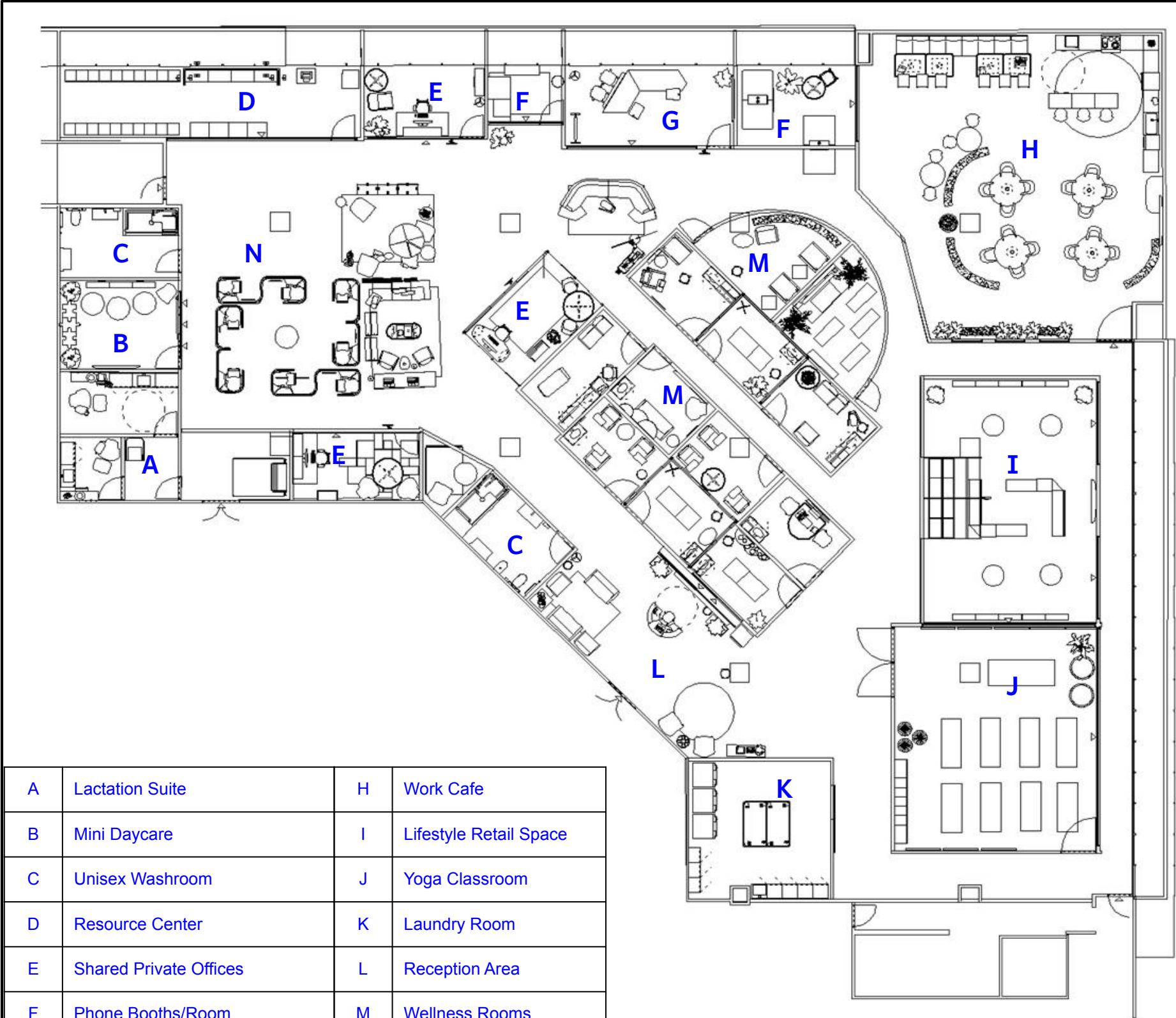
Solution Statement:

This design uses the WELL Building Standard feature V11 “Physical Activity Promotion” by encouraging workers to use and incorporate the Lifestyle Retail Space and the Yoga Classroom in their routines when coming into the office. To promote wellness overall, a design principle emphasis was implemented to help the occupants of the building realize how important NEXT WELLNESS views the wellness of company employees. Emphasis is used throughout the space via posters in the employee work area and displays of promotions on the wellness digital board in the Lifestyle Retail Space. Each space in this office space will support the WELL Building Standard feature V11 by providing:

- flexible scheduling not deducted from paid time off to accommodate physical activity
- financial rewards, including direct payments or subsidies, gift cards or prizes,
- non-monetary reward programs (e.g., employee recognition, wellness challenges or similar activities)
- team challenges/competitions to encourage employees (Holiday themed competitions on calendars in the Lifestyle Retail Space.)

To allow for the LEED category “Quality Views/Daylight.” the use of clearstory windows and frosted/tinted glass walls and windows along the rooms on the outskirts of the floor, allowing natural light to other spaces. Within these spaces are large open areas but also privatized areas to allow for focus and individual concentration. Between the spaces are transition spaces with effortless flow to get intended tasks complete.

# Furniture Plan



A	Lactation Suite	H	Work Cafe
B	Mini Daycare	I	Lifestyle Retail Space
C	Unisex Washroom	J	Yoga Classroom
D	Resource Center	K	Laundry Room
E	Shared Private Offices	L	Reception Area
F	Phone Booths/Room	M	Wellness Rooms
G	Medium Conference Room	N	Employee Work Area

Scale 1/16" = 1'





# Interior Architectural Finishes

From Mohawk Group



Brownstone Laminate

From Sherwin-Williams



Ephemeral II

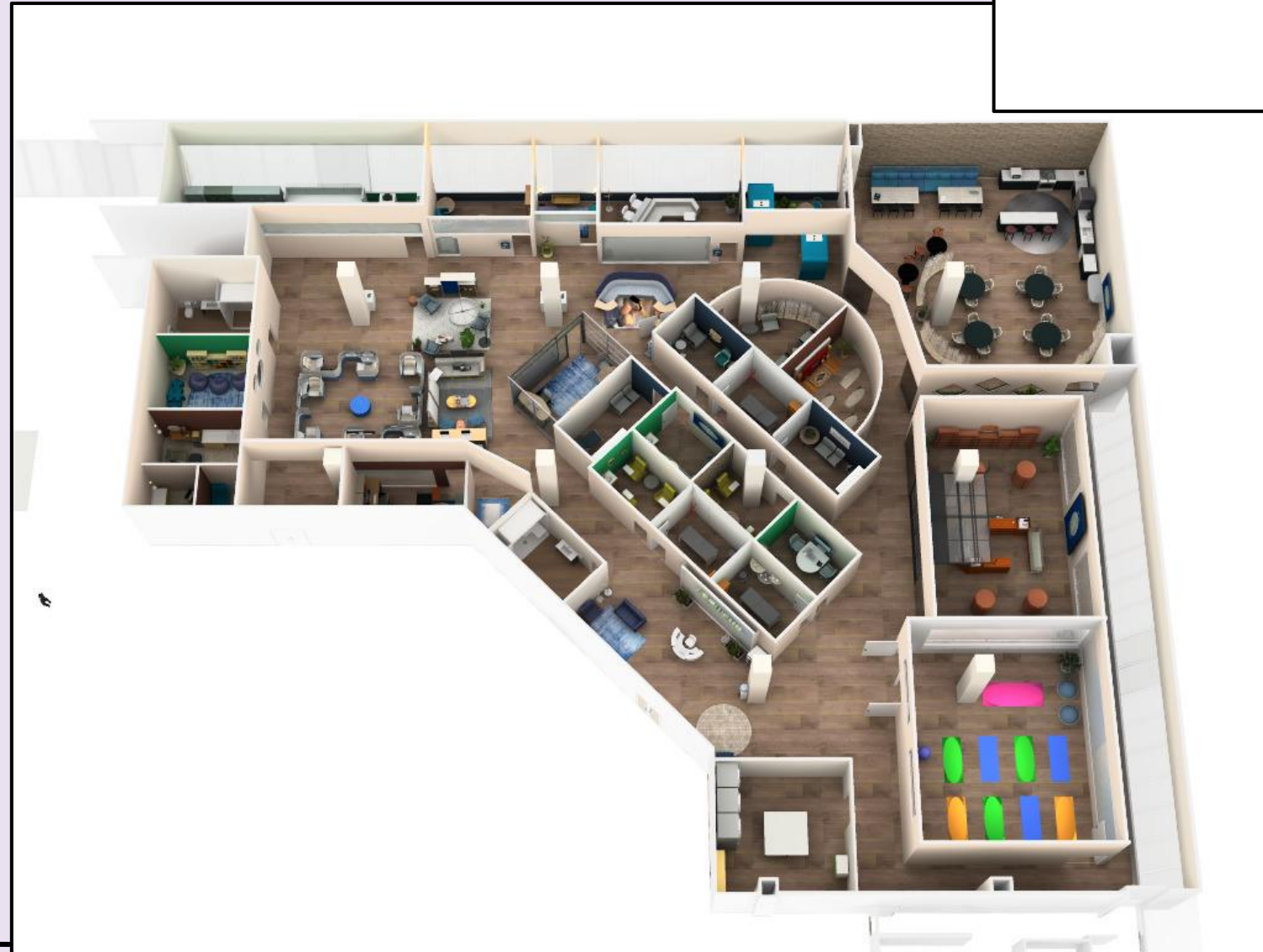
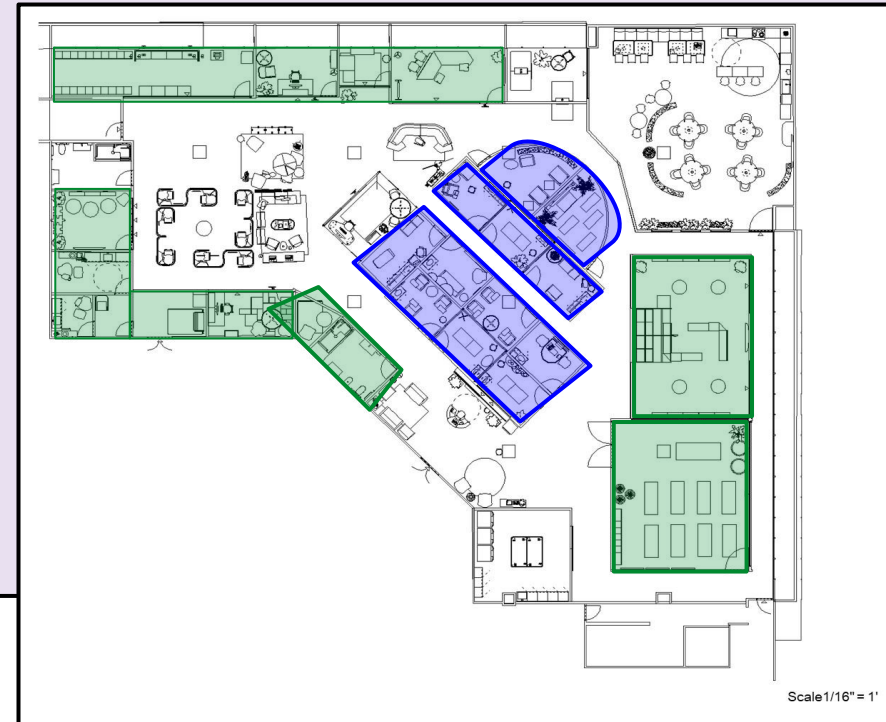


London Thyme Carpet



Ceiling Heights

- 10 feet
- 12 feet
- 16 feet



High Angle View



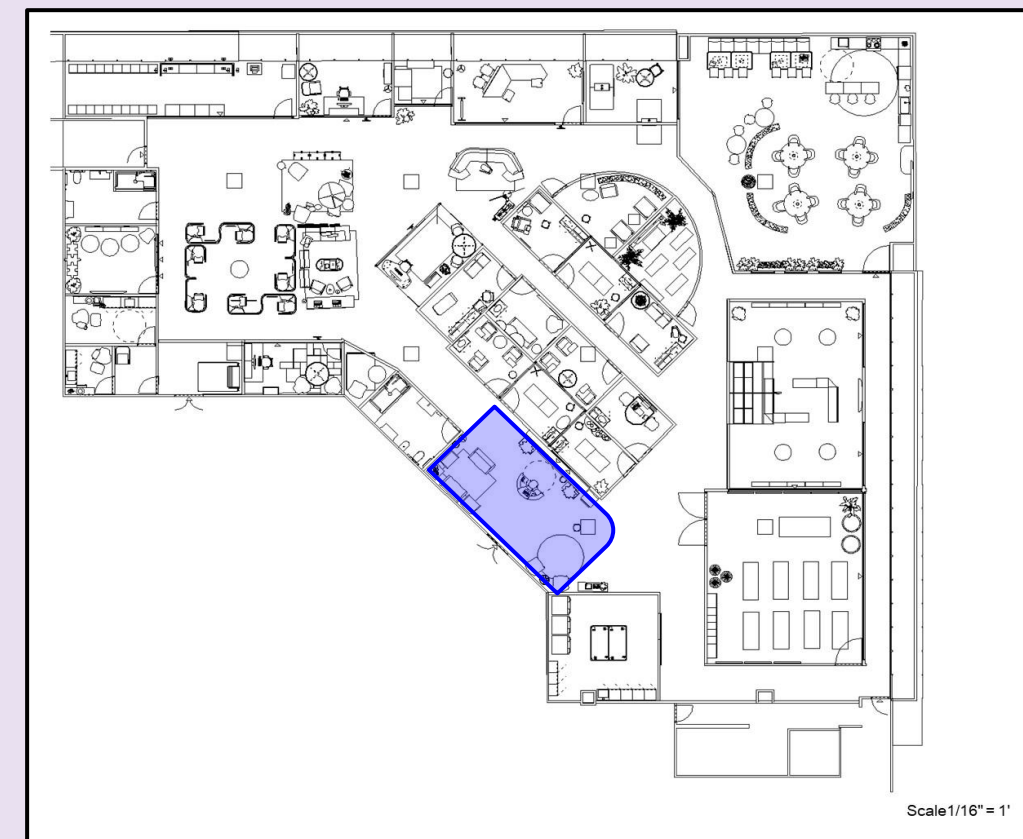


# Entrance and Reception



Scale: not to scale

Location Plan





# Entrance and Reception pt. 2



A

Marble



E

Stained Cherry  
Oak



G

Oak



C

Navy 5A25



D

Linea Blue

F

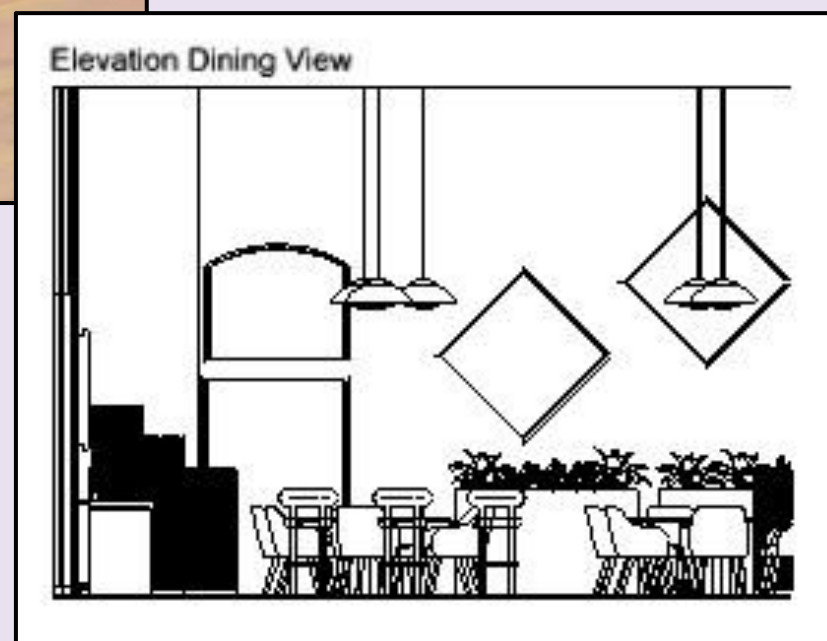


- A. Reception Desk
- B. Karman Standard Back Chair
- C. Aspekt Bariatric Seating
- D. Siesta Loveseat
- E. Coffee Table
- F. Philippa Armchair
- G. Single Bookshelf



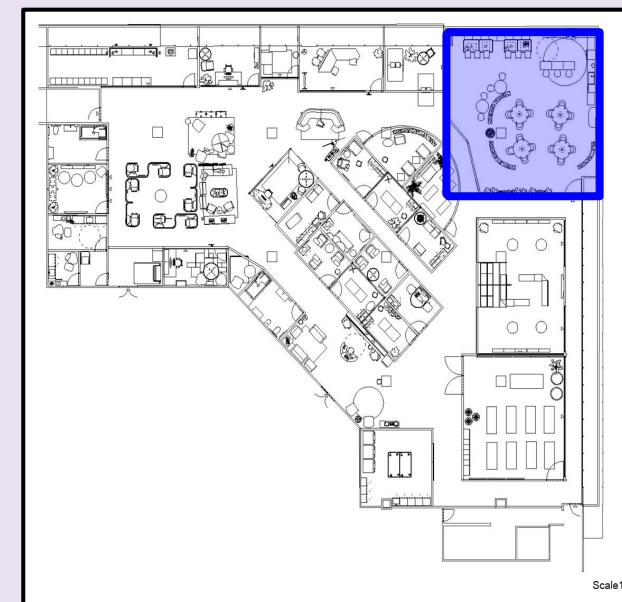


# Work Cafe



Scale: not to scale

Location Plan:

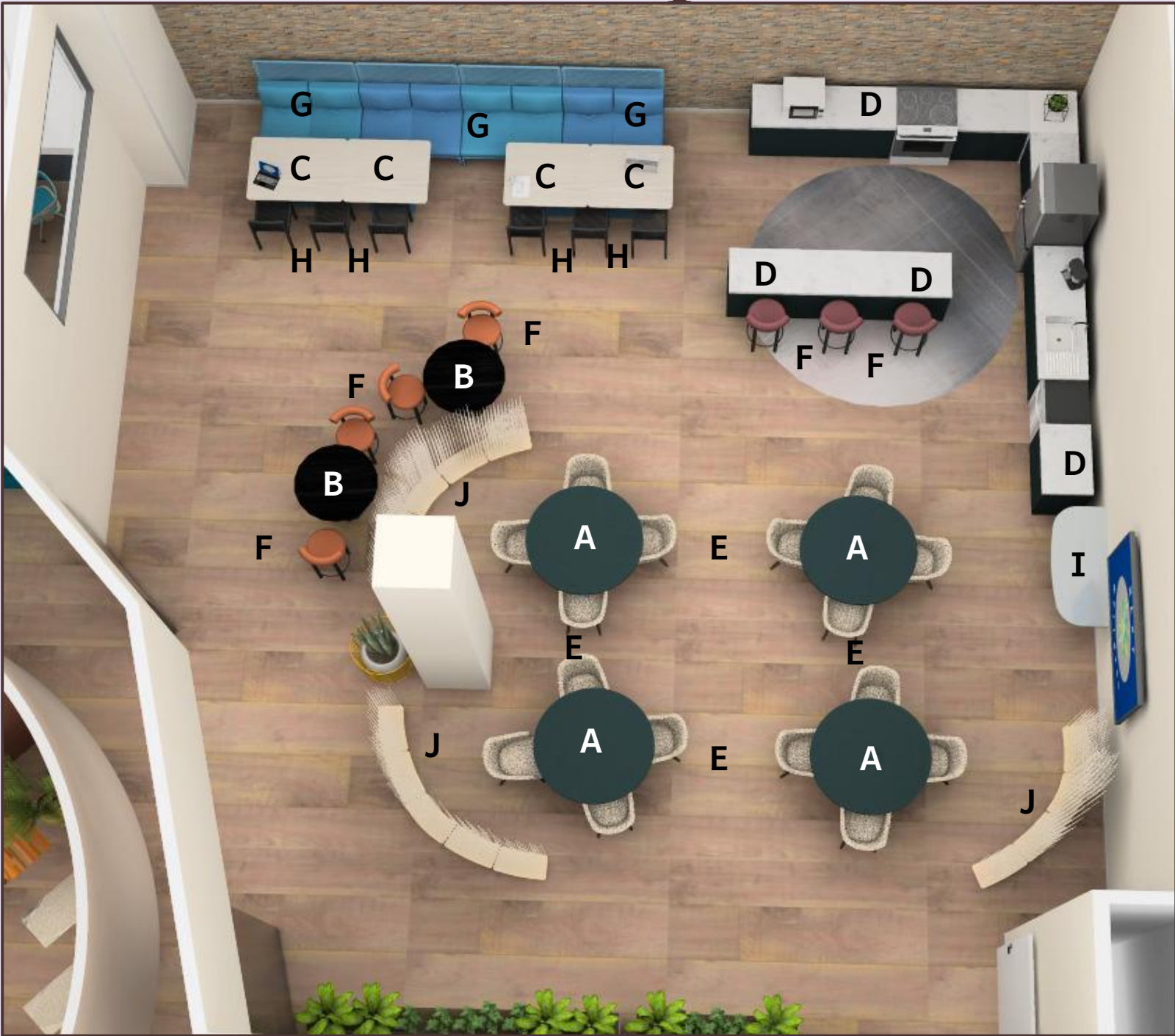


Scale 1/16" = 1'





# Work Cafe pt. 2



## Furniture:

- A. Round Table
- B. High Round Table
- C. Simple Rectangular Table
- D. Modern Base Cabinet w/ Swing Door
- E. Sterling: Chair - Guest
- F. Bar Stools
- G. Lagunitas Lounge Seating
- H. Filo Chair
- I. Dock Cupboard
- J. Wide Curved Space Divider

Stained Oak Black

A & B

COM: Dapple; Fresco

E

Divina Melange: 0581

D

Divina Melange: 0571

F

Steelcase 5636: Atlantis

G

Steelcase 5K61: Ocean

G

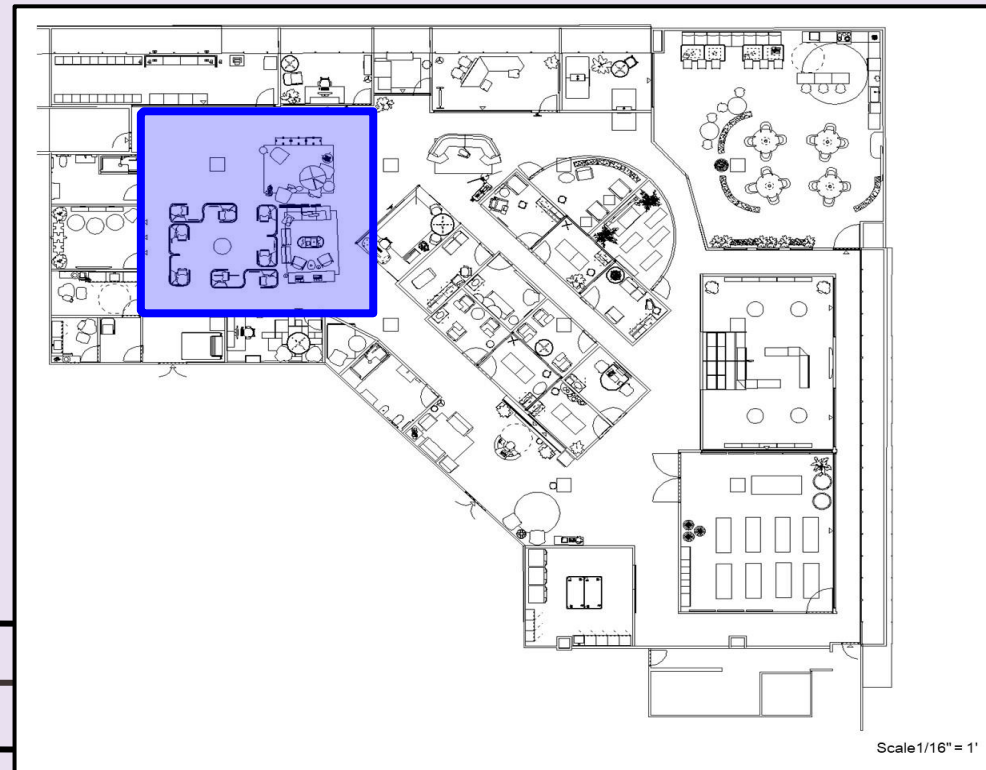




# Employee Work Area - Rendered

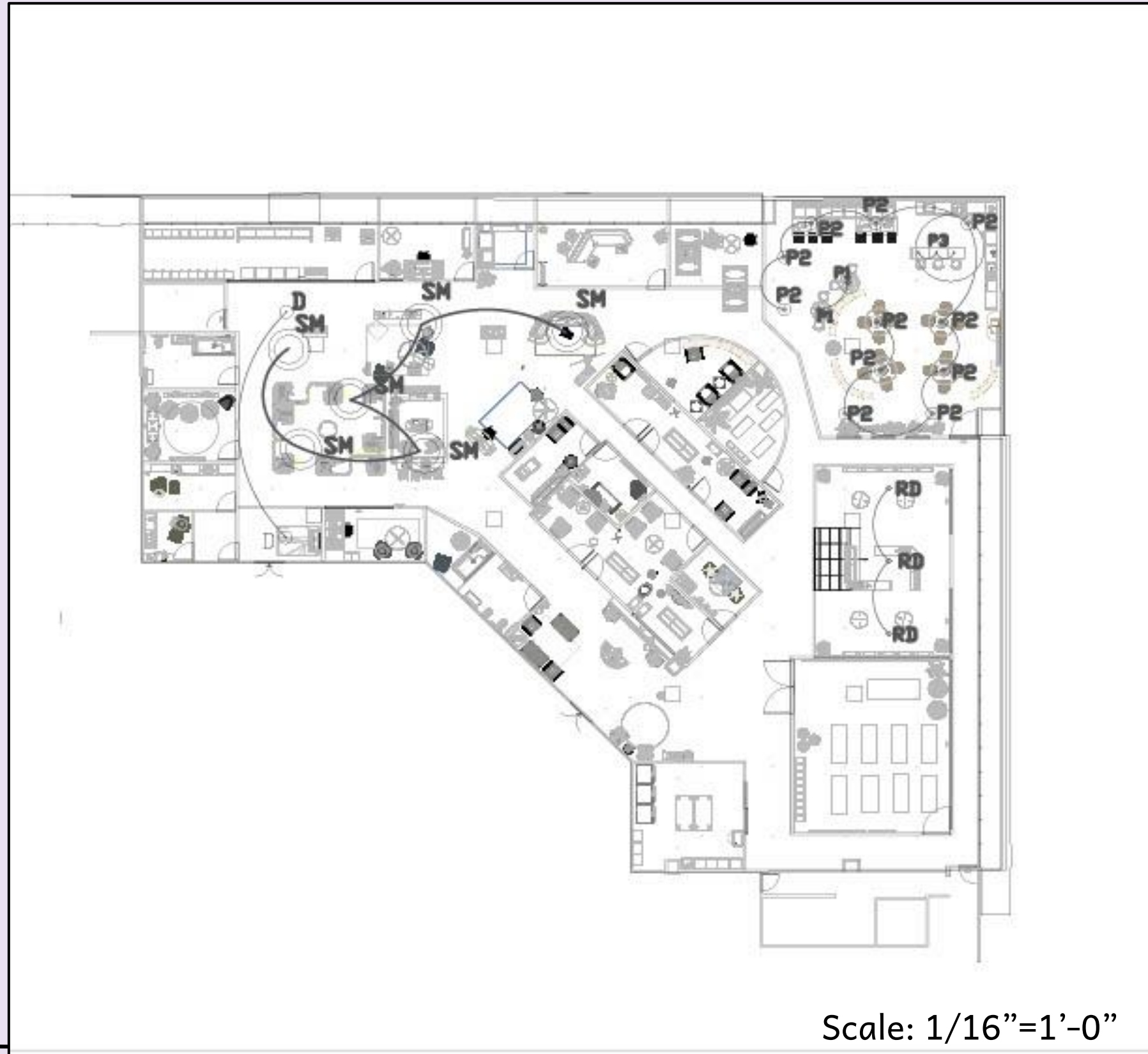


Location  
Plan:





# Reflected Ceiling Plan (RCP)



# Lighting Schedule

IMAGE	TYPE	DESCRIPTION	MANUFACTURER	WATTAGE	VOLTAGE	CHARACTERISTICS
	RD	1" Round Downlight	USA Lighting	15	UNV 120V - 277V	30KS 3000K, 80+ CRI WHITE
	P1	BOLLA MINI PENDANT	WAC LIGHTING	8	120/277V, 50/60 Hz	3000K CCT WHITE
	D	DOME SURFACE FIXTURE	C by CHAMELEON DOME SURFACE	24	120V	3000K CCT, 90CRI
	P2	DOME MINI PENDANT	WAC LIGHTING	8	120/277V, 50/60Hz	3000K CCT, 90CRI
	SM	BROADWAY SURFACE MOUNT	VISA LIGHTING	54	120-277V, 50/60 Hz	3500K CCT
	P3	ROUND SCHOOLHOUSE PENDANT LIGHT	BARN LIGHT ELECTRIC COMPANY	18	120 VAC	3000K CCT

